

General Data Protection Regulation (GDPR)

You will be aware that data protection rules are changed in May 2018

This means that we need to ask your permission for things like trips, photographs etc. more regularly.

We no longer send out forms that say, "If we don't hear from you then we presume that you are giving your permission," instead we will need your positive consent.

The Big Sign Up

We appreciate that you are all busy, but in order to allow your child to go on local visits, such as to ST Edwards or to Milne Park; to have his/her photo taken and displayed in the school or on the website, to be able to refer themselves for a chat with our SPIL counselling service, we need your permission each year.

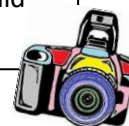
Attached to this email are the main forms which many of you signed and returned last year. In order to save paper we have emailed all of the information to you this year and have just sent out one form for your signature. Your child will bring this home this week.

Please return the paper form to Mrs Shipley.

As these forms are important, she will contact you if she does not hear from you.

We want to keep your child safe, but don't want to stop you having memories of your child's primary school days by stopping you taking **photos at sports days and in assemblies or shows.**

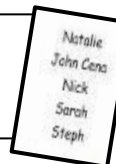
There is a form for you to sign which says that you, or anybody representing you at a school event, such as a family member or friend, can take photos of your child but will not share them beyond your family.



Information that school retains

The attached letter "Privacy Notice" tells you about the information that school retains on you and your child, what we do with it, why we keep it and who is able to access it. Please make sure that you read this carefully.

Class list. Often parents ask for lists of class names, for invitations to parties etc. We can still do this, but with first names only.



You will appreciate that children worry about all sorts of things, falling out with friends, the death of a pet etc. Having someone to talk to at lunchtime is a great help. Hundreds of pupils access the **SPIL** lunchtime drop in every year. We will now need your positive permission for your child to access this service. (*This is different to main SPIL counselling which has always needed a discussion with parents before counselling begins.*)



Local trips: When your child started at Fairchildes, you signed a form to give permission for them to go with their teachers on trips in the local area, such as to Milne Park or to help at The Vine Foodbank. We now need you to sign this form each year.

