



Weekly Newsletter

7th March 2025

Values Champions



- The Bridge - Chibby
- RW - Mariah
- 1E - Bobby-Lee
- 1G - James
- 2C - Akira
- 2I - Jude
- 3H - Kristina
- 3R - Lilly
- 4D - Harrison
- 5C - Gregor
- 5S - Ivy
- 6D - Oliver
- 6V - Lilly S

Attendance

- Best Class - 5S—100%
- Most Improved - 2I
- Whole School attendance
93.8%
- Position in Trust - 2nd
- Most Trophies - 5C 27

Handwriting Champions



- 1E - Ollie
- 1G - Nathari
- 2C - Laynie
- 2I - Amelia
- 3H - Murat
- 3R - Karley
- 4D - Mason
- 5C - Gregor
- 5S - Janice
- 6D - Miya
- 6V - Malachi



Fast Fact Champions

- 1G Ozzy
- 1E Lacey
- 2C Riyana
- 2I Betsy

Always Champions



- RW - Tommy & Justice
- 1E - Amjad & Ayo
- 1G - Lacey & Felicity
- 2C - Macie & Jayhon
- 2I - Harper & Betsy

Golden Table

- The Bridge -
- Yr1 -
- Yr2 -

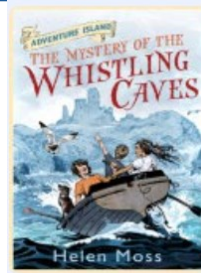
Spelling Champions

- 1E - Hoorain
- 1G - Felicity
- 2C - Camellia
- 2C - Bella
- 3H - Annabelle
- 3R - Alevia
- 4D - Georgia
- 5C - Emily
- 5S - My
- 6D - Sinade
- 6V - Francesca

- 3H Ariana
- 3R Aniyah
- 4D Ela
- 5C Alpha
- 5S Yabassah
- 6V Lamine
- 6D Trang

Recommended Read of the Week

Mrs Davies recommends *The Mystery of the Whistling Caves*. A group of children set off on an exciting holiday adventure with a very puzzling mystery to solve.



Key Dates:

Wednesday 12th March

Speak Out, Stay Safe
NSPCC Workshop
(selected Yr groups)

Thursday 13th March

Reception Class Assembly
Time TBC

Friday 14th March

Yr6 Shakespeare
Workshop at Fairchildes
Primary

British Values Question

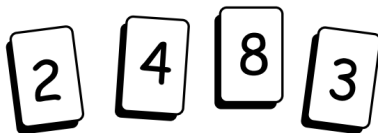
What does freedom mean?



Maths Problem of the Week

Sum up

Choose from these four cards.



KS1

Make these totals:

9
10
11
12
13
14
15

What other totals can you make from the cards?

